

A secure link starts with the selection and the specification of a reliable, high performance connector. Ridgemount has over 20 years experience designing and manufacturing fibre optic connectors for a variety of applications.

The **BOMAN** Bayonet Outdoor connector is a rugged and robust housing designed for IP68 harsh environment applications. The range has been designed to accommodate Du-plex LC [2 Fibre] and MPO interfaces [12 Fibre].



Applications

- FTTx Networks and Drop Cables
- Base Station and Antenna Equipment
- SAN and Industrial Outdoor Environments
- Transport and Railway Installations
- Rapid Deployment Broadcast Networks



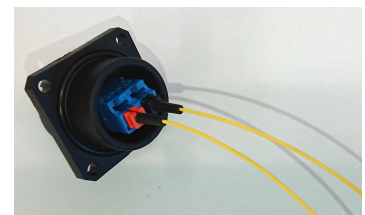
Deployable Cable Options



IP68 Plug Pulling Head

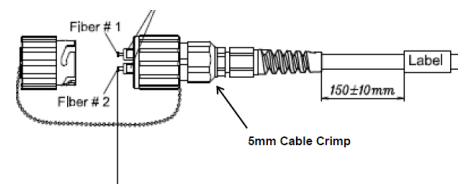
Features & Benefits

- IP68 Harsh Environment Physical Contact Connector
- Available as LCPC, LCAPC and MTP options
- Bayonet locking design for easy mating
- Plug to Plug, Bulkhead and Square Flange Receptacle Options
- Cables between 3.5mm and 6.0mm diameter

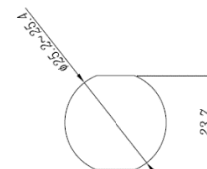
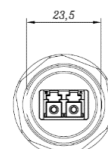
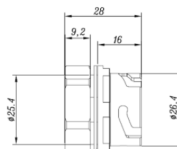
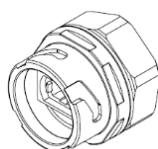


Square Flange Receptacle with low profile LCv Feed Connectors

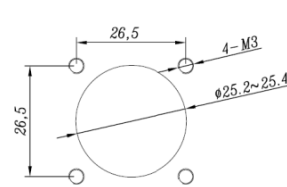
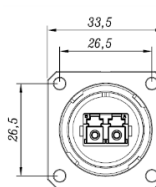
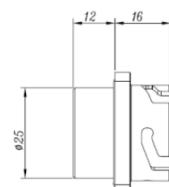
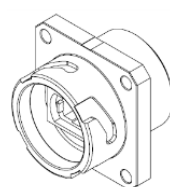
Schematics



Panel Mount



Square Flange Bulkhead



Technical Specification

140 Series	BOMAN LC	PERFORMANCE
Plug Connector	IEC 61754-20	LC
Connector Material	Plastic	PPS
Optical Alignment	Physical Contact	PC & APC options
Ferrule	Zirconia Ceramic 1.25mm	ID125.5 / 1.0µm
Fibre Channels	Duplex	Two
Crimp Die Size	Hex	8.6mm
Total Plug Length [Incl Boot]	mm	<135mm
Optical Performance - <i>subject to termination method and fibre grade</i>		
Insertion Loss [Max]	IEC 61300-3-4	≤0.5dB
Insertion Loss [Typical]	IEC 61300-3-4	≤0.25dB
Insertion Loss [Random]	IEC 61300-2-40/41	≤0.25dB >97%
Return Loss	IEC 61300-3-6	UPC>55dB; APC>65dB
Repeatability	IEC 61300-2-2	±0.2dB / 500 matings
End Face Symmetry	IEC 61755-2-1	Radius: Offset: Height:
Mechanical Performance - <i>subject to termination method and fibre grade</i>		
Vibration	IEC 61300-2-1	10Hz – 55Hz
Durability	IEC 61300-2-2	x 500 matings
Impact	IEC 61300-2-12	5 Drops (1.5m)
Cable Retention	IEC 61300-2-4	70N at 4x90° axis min.100mm
Fibre Retention	IEC 61300-2-4	up to 90N [fibre dependant]
Environmental Performance - <i>subject to termination method and fibre grade</i>		
Operational Temperature	IEC 61300-2-22	-40°C to +80°C

Ordering Information

BOMAN Connector Series	
Part Number	Description
140 9510 01	BOMAN Plug Connector Kit - LCAPC - 5mm Cable Crimp - 110mm Long Boot
140 9510 02	BOMAN Plug Connector Kit - LCUPC - 5mm Cable Crimp - 110mm Long Boot
140 9510 08	BOMAN Bulkhead Receptacle - Square Flange - Duplex LCAPC
140 9510 09	BOMAN Bulkhead Receptacle - Circular Flange - Duplex LCAPC
140 9510 18	BOMAN Bulkhead Receptacle - Square Flange - Duplex LCUPC
140 9510 19	BOMAN Bulkhead Receptacle - Circular Flange - Duplex LCUPC
140 9510 50	BOMAN Connector - IP68 - Pulling Head

Note: Further references and parts available on request.