

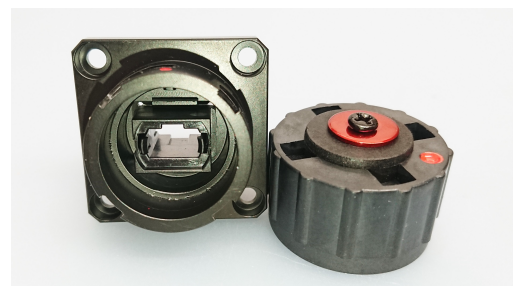
A secure link starts with the selection and the specification of a reliable, high performance connector. Ridgemount has over 20 years experience designing and manufacturing fibre optic connectors for a variety of applications.

The **BOMAN Bayonet Outdoor connector** is a rugged and robust housing designed for IP68 harsh environment applications. The range has been designed to accommodate Duplex LC [2 Fibre] and MPO interfaces [12 Fibre].



Applications

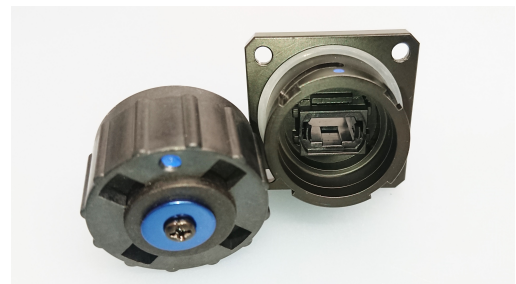
- FTTx Networks and Drop Cables
- Base Station and Antenna Equipment
- SAN and Industrial Outdoor Environments
- Transport and Railway Installations
- Rapid Deployment Broadcast Networks



Square Flange INLINE Receptacle with RED ID for BOMAN Connector without PINS MTP - nline key

Features & Benefits

- IP68 Harsh Environment Physical Contact Connector
- Available as LCPC, LCAPC and MTP options
- Bayonet locking design for easy mating
- Plug to Plug, Bulkhead and Square Flange Receptacle Options
- Cables between 3.5mm and 6.0mm diameter



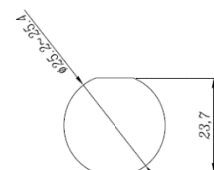
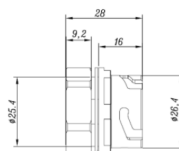
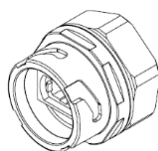
Square Flange INLINE Receptacle with BLUE ID for BOMAN Connector with PINS MTP - opposite key

Schematics

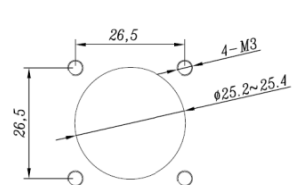
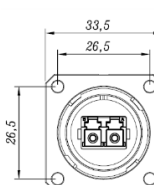
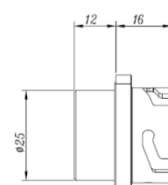
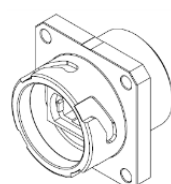
Unique PLUG - PLUG Daisy Chain Options



Panel Mount
Circular
Receptacle



Square Flange
Bulkhead
Receptacle



Technical Specification

140 Series	BOMAN MT	PERFORMANCE
Plug Connector	IEC 61754-20	MT
Connector Material	Plastic	PPS
Optical Alignment	Physical Contact	PC & APC options
Ferrule	MPO-Low Loss	MPO Ferrule
Fibre Channels	≤12 fibre	Elite
Crimp Die Size	Hex	8.6mm
Total Plug Length [Incl Boot]	mm	<135mm
Optical Performance - subject to termination method and fibre grade		
Insertion Loss [Max]	IEC 61300-3-4	≤0.5dB
Insertion Loss [Typical]	IEC 61300-3-4	≤0.35dB
Insertion Loss [Random]	IEC 61300-2-40/41	≤0.25dB >97%
Return Loss	IEC 61300-3-6	UPC>55dB; APC>65dB
Repeatability	IEC 61300-2-2	±0.2dB / 500 matings
End Face Symmetry	IEC 61755-2-1	Radius: Offset: Height:
Mechanical Performance - subject to termination method and fibre grade		
Vibration	IEC 61300-2-1	10Hz – 55Hz
Durability	IEC 61300-2-2	x 500 matings
Impact	IEC 61300-2-12	5 Drops (1.5m)
Cable Retention	IEC 61300-2-4	70N at 4x90° axis min.100mm
Fibre Retention	IEC 61300-2-4	up to 90N [fibre dependant]
Environmental Performance - subject to termination method and fibre grade		
Operational Temperature	IEC 61300-2-22	-40°C to +80°C

Ordering Information

BOMAN Connector Series	
Part Number	Description
140 9510 03	BOMAN Plug Connector Kit -MTP®Elite NO PINS APC -5mm Cable Crimp-Long Boot
140 9510 04	BOMAN Plug Connector Kit - MTP®Elite PINS APC - 5mm Cable Crimp - Long Boot
140 9510 12X	BOMAN - BOMAN Receptacle - RED X - SqFl - Hard Black Anodized - MTP Adaptor
140 9510 12X	BOMAN - BOMAN Receptacle - BLU X - SqFl - Hard Black Anodized - MTP Adaptor
140 9510 11	BOMAN Bulkhead Receptacle - PPS Circular - Smode MTP Adaptor
140 9510 10	BOMAN Bulkhead Receptacle - PPS Square Flange - Smode MTP Adaptor
140 9510 50	BOMAN Connector - IP68 - Pulling Head

Note: Further references and parts available on request.

