

## 165-01 Series LC-QR Connector

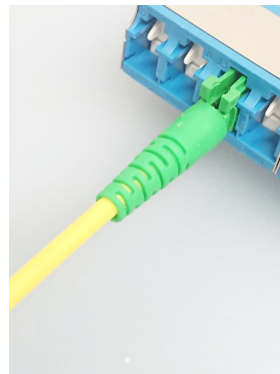
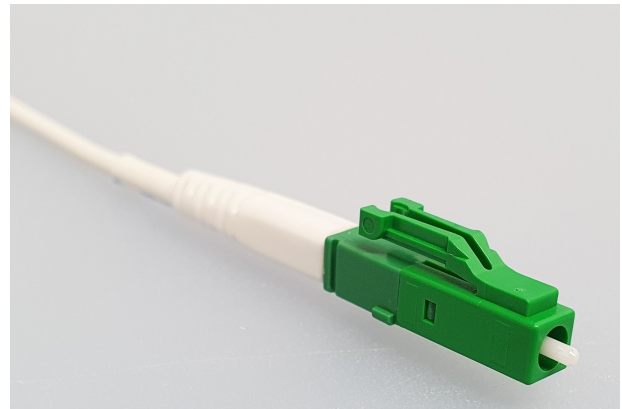


The Ridgemount LC-QR™ [Quick Release] is a simplex LC connector with a unique patented front body latch.

The LC-QR™ disconnects from a standard LC adaptor under cable loading or accidental snagging to protect both the cable assembly and the equipment adaptor.

The LC-QR™ is designed to dis-engage at loads up to 25N and when snagged will disconnect at loads as low as ~5N.

Available as PC or APC for a variety of fibre and cable sizes, the LC-QR™ is ideal for use where it is important for the assembly to dis-connect before the jumper or equipment is permanently damaged.



## Applications

- Equipment - CPE Interconnect
- In Home Fibre Installations
- FTTH Distribution & Cross connects

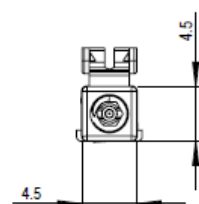
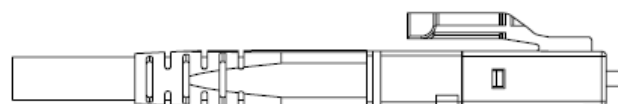
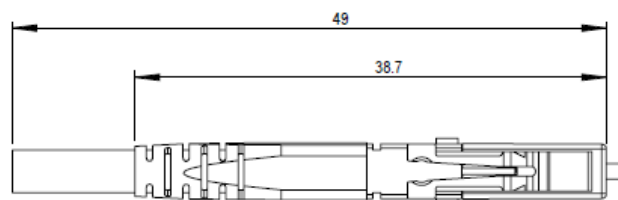
## Features

- Industry Standard LC Interface Compliant
- Quick Release Latch when cable is pulled
- Standard Termination Process
- PC and APC Options
- Patent Applied

## Benefits

- Compatible with all Industry Adaptors
- De-Latches before cable or equipment is damaged
- Commercially Available Assembly Tooling
- Choice for different fibres and performance grades

## Schematic



## Technical Specification

165 Series	LC-QR™*	PERFORMANCE
Plug Connector	IEC 61754-20	LC-QR [Quick Release Latch]
Connector Material	Plastic	TPE
Optical Alignment	Physical Contact	PC & APC options
Ferrule	Zirconia Ceramic 1.25mm	ID125.5 / 0.5µm
Fibre Channels	Simplex	One
Crimp Die Size	Round	0.12" [3mm]
Total Length [Incl Boot]	mm	38mm
<b>Optical Performance</b> - <i>subject to termination method and fibre grade</i>		
Insertion Loss [Max]	IEC 61300-3-4	≤0.25dB
Insertion Loss [Typical]	IEC 61300-3-4	≤0.12dB
Insertion Loss [Random]	IEC 61300-2-40/41	≤0.25dB >97%
Return Loss	IEC 61300-3-6	UPC>55dB; APC>65dB
Repeatability	IEC 61300-2-2	±0.2dB / 500 matings
End Face Symmetry	IEC 61755-2-1	Radius: Offset: Height:
<b>Mechanical Performance</b> - <i>subject to termination method and fibre grade</i>		
Vibration	IEC 61300-2-1	10Hz – 55Hz
Durability	IEC 61300-2-2	x 500 matings
Impact	IEC 61300-2-12	5 Drops (1.5m)
Cable Retention	IEC 61300-2-4	70N at 4x90° axis min.100mm
Fibre Retention	IEC 61300-2-4	upto 30N [fibre dependant]
<b>Environmental Performance</b> - <i>subject to termination method and fibre grade</i>		
Operational Temperature	IEC 61300-2-22	±0.2dB (-40°C to +85°C)

\*Note - The LC-QR™ will disengage the adaptor at 25N under load avoiding damage to connector assembly and adaptor.

## Ordering Information

LC-QR - Connector Series	
Part Number	Description
165 5761 11	Conn LCAPC-QR - 125.5 - 0.5um - Green 3.0 mm - White Boot
165 5861 11	Conn LCAPC-QR - 125.5 - 1.0um - Green 3.0 mm - White Boot
165 5741 11	Conn LCAPC-QR - 125.5 - 0.5um - Green 2.0 mm - White Boot
165 5841 11	Conn LCAPC-QR - 125.5 - 1.0um - Green 2.0 mm - White Boot
165 5761 13	Conn LCPC-QR - 125.5 - 0.5um - Blue 3.0 mm - White Boot
165 5861 13	Conn LCPC-QR - 125.5 - 1.0um - Blue 3.0 mm - White Boot
165 5741 13	Conn LCPC-QR - 125.5 - 0.5um - Blue 2.0 mm - White Boot
165 5841 13	Conn LCPC-QR - 125.5 - 1.0um - Blue 2.0 mm - White Boot