

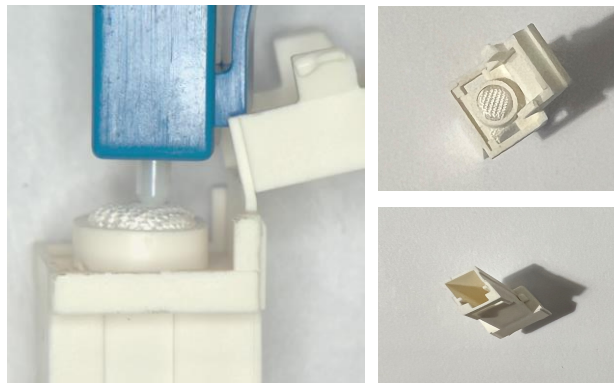
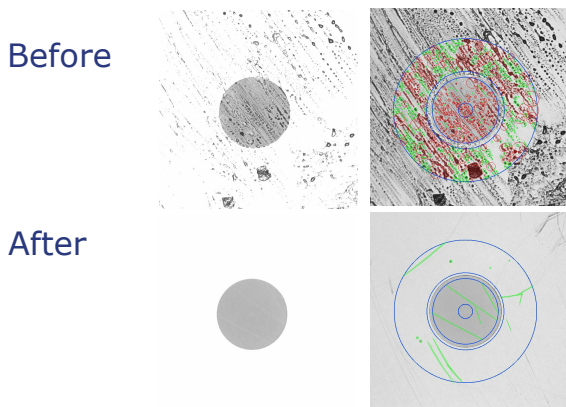
160-04 Series LC sWIPE Dust Cap

The Ridgemount LC sWIPE dust cap is designed to fit over its simplex LC-QR™ and LC-TT™ connectors. It protects the connector against dust and other contaminants and, importantly, provides a means to quickly clean the connector on-site before use.

Incorporating this cleaning functionality in the dust cap means the technician does not need to carry a cleaning kit when making the final connection between the wall outlet and broadband CPE.

The cleaning pad is revealed by flipping open the dust cap top. Wipe the ferrule tip 4 times across the cleaning pad to clean it. Note that this is a one-time operation.

Cleaning example



Swipe to clean

Top side & body view



Scan this QR code to see how to use it.

Applications

- Ridgemount LC-QR™ and LC-TT™ connectors
- Standard LC connectors

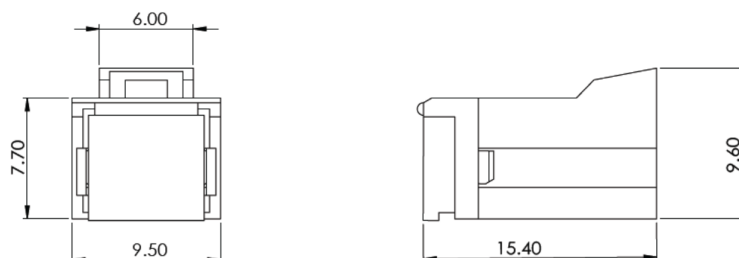
Features & Benefits

- In-built cleaning pad in the top of the dust cap
- Cleaning fabric meets class 1 clean room standards
- Compatible with all Industry LC connectors
- No need to carry a separate cleaning kit
- Consumer friendly use

Ordering Information

Part Number	Description	Pack size
160 8002 35	Conn Part - LC sWIPE Dust Cap - White - [Box 200]	200

Schematic



Key dimensions in mm of the LC sWIPE dust cap